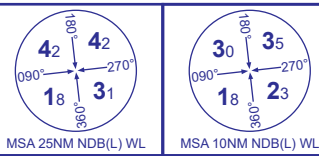


PROCEDURE CHART - ICAO

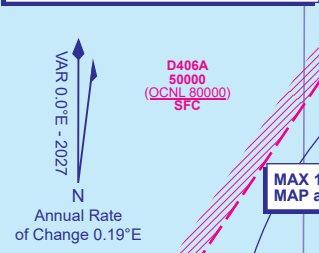
WALNEY RNP RWY 35
(ACFT CAT A,B)



AFIS 118.080	WALNEY INFORMATION	AD ELEVATION 44
		THR ELEVATION 44
		OBSTACLE ELEVATION 1230 AMSL (1186) (ABOVE THR)
		BEARINGS ARE MAGNETIC

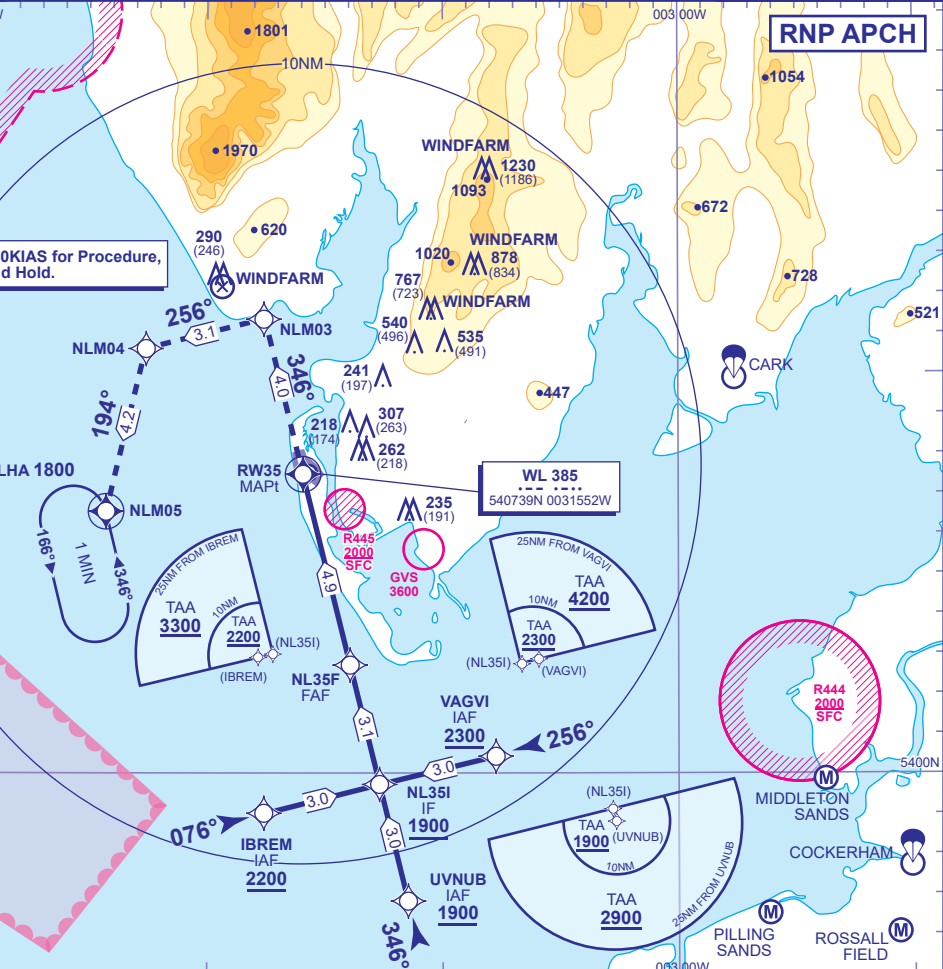
MIN TEMP -10°C
TRANSITION ALTITUDE 3000

WARNING
Pilots must ensure they are aware of the active status of D406A.



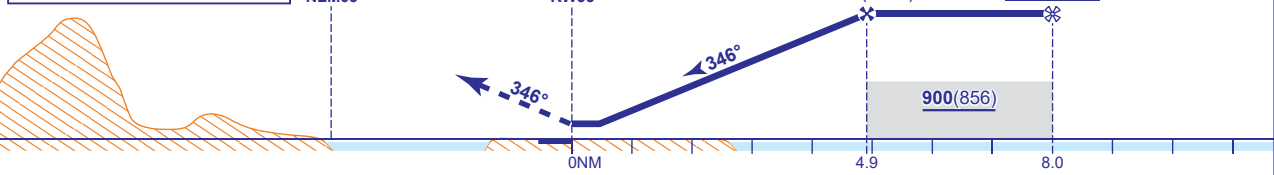
WAYPOINTS
UVNUB : 535647.80N 0031127.86W
VAGVI : 540025.11N 0030744.19W
IBREM : 535858.94N 0031736.61W
NL35I : 535942.28N 0031240.79W
NL35F : 540242.26N 0031356.20W
RW35 : 540727.50N 0031556.09W
NLM03 : 541120.08N 0031734.20W
NLM04 : 541035.92N 0032237.53W
NLM05 : 540631.59N 0032417.92W

MAX 140KIAS for Procedure, MAP and Hold.



RECOMMENDED PROFILE VNAV - VERTICAL PATH ANGLE 3.5° (LNAV 6.1% 372FT/NM)				
NM to RW35	4	3	2	1
ALT(HGT)	1570(1526)	1200(1156)	830(786)	450(406)

MAPt (LNAV): RW35
Climb straight ahead to NLM03, then turn left to NLM04, then turn left and continue to climb to 3000 to hold at NLM05.



Aircraft Category		A	B	Rate of descent	G/S KT	160	140	120	100	80
OCA (OCH)	LNAV	430(386)	430(386)		FT/MIN	990	870	740	620	500
	LNAV/VNAV	300(256)	300(256)							
VM(C)OCA (OCH AAL)		Total Area	700(656)	700(656)						

NOTE Use of this procedure is strictly PPR from the aerodrome operator.

CHANGE (11/25): MAG VAR. MAG TRACKS.